

# INSTRUMENT APPROACH CHART

## AERODROME ELEV 435'

HEIGHTS RELATED TO THR RWY 11 - ELEV 435'

## EAST LONDON

(Cat A - D) ILS Z Rwy 11

FAEL

BEARINGS ARE MAGNETIC ALTITUDES, ELEVATIONS AND HEIGHTS IN FEET. DISTANCES IN NM.

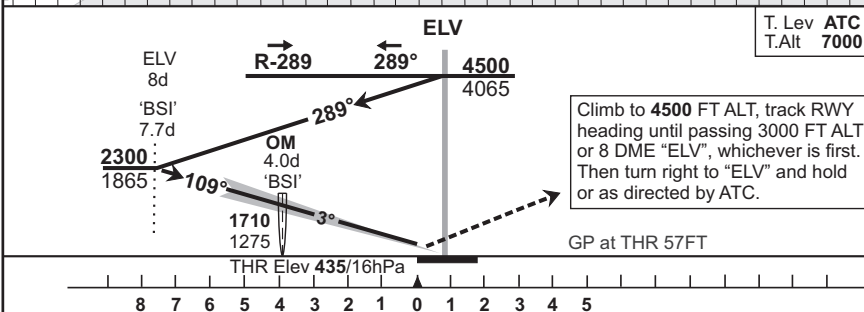
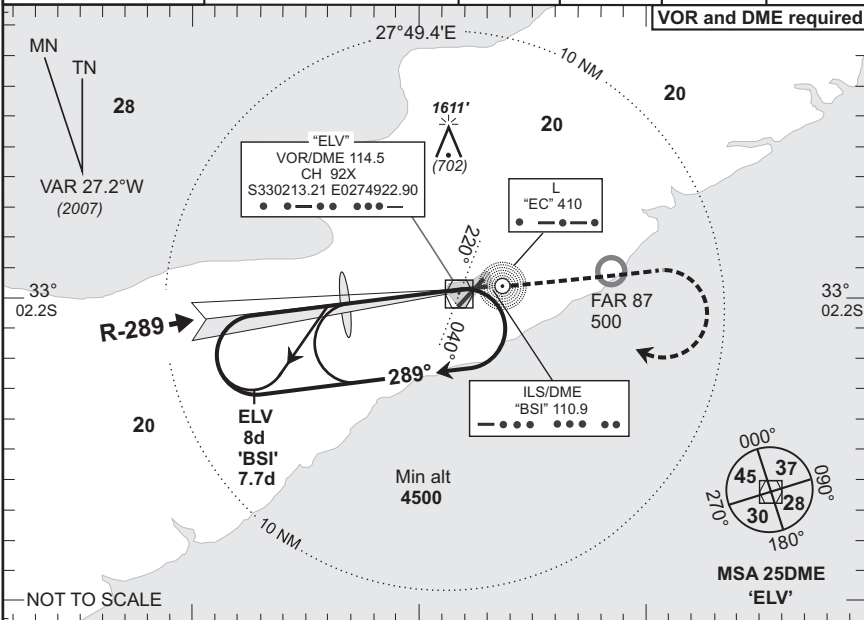
**EAST LONDON Approach**  
120.1

**Tower**  
118.3

**Apron**  
122.65

**ATIS**  
126.65

**ILS-01**  
EFF  
03 Jul 08



1. Initial approach altitude 4500 or higher MSA.
2. Procedure turn approach applicable only within 30° of the outbound heading. Use phraseology "Request procedure turn approach".
3. Circle to land at the discretion of the pilot in command.
4. ILS/DME ("BSI" 110.9) collocated with glide slope transmitter.

OCA/H					"BSI" 4d - THR							
Cat of ACFT		A	B	C	D	Speed	Kt	80	100	120	140	160
		Straight-in	Cat 1	570(135)	578(143)	588(153)	597(162)	Time	M:s	2:51	2:17	1:54
	Cat 11					Rate of Descent	Fpm	420	530	640	740	850
Approach	GP INOP					"BSI" ILS/DME	4d	3d	2d			
Circling						Advisory Alt/Hgt	1710(1275)	1390(955)	1075(640)			

Rev: VAR & FAD-190 Removed

WGS-84